



Predator Travelers™ v8.0 – What's New

Latest features and benefits in v8.0

Before Installing v8.0

Predator Travelers v8.0 requires Windows 2000, XP, 2003 Server or Vista. Existing customers that have older versions of Windows such as Windows 95, 98, ME or NT v4.0 must upgrade Windows prior to installing v8.0 of Predator Travelers.

Existing Travelers customers should backup the database prior to upgrading. Predator Travelers Administrator v8.0 will upgrade the database automatically from older v1.x, v2.x, v3.x or v7.x versions to v8.0. After the database has been upgrade to v8.0 older versions of Predator Travelers will not be able to use the database.

NOTE: Microsoft Internet Explorer v5.x or later is required to be installed before installing Predator Travelers v8.0.

Why v8.0?

By design, the primary goal of this release is to improve day to day traveler management. Along the way support for Vista and 64 bit editions of Windows have been added. Details of what's new are explained throughout this document and within the online help.

NOTE: Predator Travelers Xpress has been renamed to Predator Travelers Express.

Installing v8.0

A new Install Wizard has been developed for v8. It is based on a single .MSI image and .CAB files have been eliminated. If you are running Windows 98, ME or NT v4.0 you must upgrade to Windows 2000, XP, 2003 Server or Vista prior to installing v8.0 of Predator Travelers.

By default installation occurs in the \program files\predator software\Travelers 8.0 directory. If you were previously running v7.x we recommend uninstalling v7.x prior to installing v8.0.

NOTE: Microsoft's .Net Framework v2.0 is now required.

v8.0 Serial Numbers and Access Codes

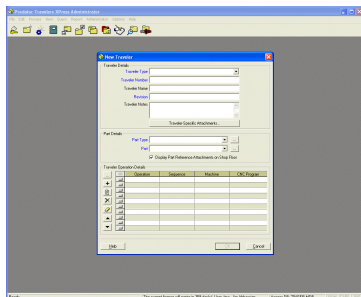
Version 8 includes a serial number and an access code that are required after the installation during registration of the software.

NOTE: The serial number must start with 08 if this is not the case contact us.

© 1994 – 2008 Predator Software Inc. All rights reserved.

THIS IS A LIVING DOCUMENT. The information contained in this document represents the current view of Predator Software Inc. on the issues discussed as of the date of publication. Because Predator Software Inc. must respond to changing market conditions, it should not be interpreted to be a commitment on the part of Predator Software Inc., and Predator Software Inc. cannot guarantee the accuracy of any information presented after the date of publication.

Predator Travelers



Network Installations of v8.0

By committing to store the product installation on a server, users will enjoy automatic healing of all critical files upon running Predator Travelers. For example, suppose a user accidentally deletes ptrav.exe. Under normal circumstances he would be down and the software would fail to run. With v8.0 when the user double clicks the desktop shortcut all critical files are checked and if necessary restored from the network server and the software begins to run automatically.

The easiest way to perform a network installation is to step through the following:

1. Copy the contents of the CD to a \predator cd images\CD30\ or similar directory.
2. Run the setuptraveler.exe from the CD30 directory.

NOTE: Should any automatic healing be necessary, Predator Travelers will be able to automatically extract the necessary files from the appropriate files stored in the CD30 directory. If you install from a CD, Predator Travelers will be forced to prompt for the CD.

What's New in v8.0?

New! Microsoft Windows Vista Support

Support for Microsoft Windows Vista has been added with v8.0 of Predator Travelers.

New! Microsoft Windows 64 Bit Support

Support for Microsoft Windows XP Professional x64 Edition, Windows 2003 Server x64 Edition and Windows Vista x64 Editions have been added with v8.0 of Predator Travelers.

New! Microsoft Office Access 2007 Support

Support for Access 2007 has been added with v8.0 of Predator Travelers.

New! Oracle Database 11g Support

Support for Oracle Database 11g has been added with v8.0 of Predator Travelers.

New! International Support

Internationalization of Predator Travelers has been re-designed so a single PTRAV.exe can support multiple languages. Our initial release includes English and Chinese. Additional languages can be added as they become available. Predator Travelers automatically honors that appropriate language based on the Windows language. For example, if you have Chinese Windows installed then Predator Travelers will automatically display in Chinese. This effort significant simplifies product releases and allows a worldwide customer base to run the same version.

New! Dynamic Wizard Bitmaps

Predator Travelers v8.0 has added dynamic wizard bitmaps to the following new and edit wizards: tools, cutters, inserts, kits and gages. These bitmaps (*.bmp) need to be the first attachment to the appropriate tool type, cutter type, insert type, kit type and gage type. All bitmaps should be formatted for 120 pixels wide by 275 pixels tall.

New! Delete Key Shortcut

Predator Travelers v8 adds a delete key shortcut within the following wizards: New Traveler, New Traveler Express, Edit Traveler Express, New Kit Number, Edit Operations, Edit Materials per Operation, Edit Parts per Operation, Edit Materials per Operation, Edit Tools per Operation, Edit Kits per Operation, Edit Cutters per Operation, Edit Inserts per Operation, Edit Gages per Operation, Edit Inspections per Operation and Edit Part Type Reference Dimensions.

New! Insert Key Shortcut

Predator Travelers v8 adds a insert key shortcut within the following wizards: New Traveler, New Traveler Express, Edit Traveler Express, New Kit Number, Edit Operations, Edit Materials per Operation, Edit Parts per Operation, Edit Materials per Operation, Edit Tools per Operation, Edit Kits per Operation, Edit Cutters per Operation, Edit Inserts per Operation, Edit Gages per Operation, Edit Inspections per Operation and Edit Part Type Reference Dimensions.

New! User Command Line

A new command line argument has been added to automatically specify the user name for the login. For example:

```
ptrav.exe -user jima
```

New! Password Command Line

A new command line argument has been added to automatically specify the password for the login. For example:

```
ptrav.exe -password predator
```

NOTE: The user and the password can be combined in a single command line. For example:

```
ptrav.exe -user jima -password predator
```

New! First Article Signoff Command Line

A new command line argument has been added to automatically start the Check In dialog. For example:

```
pTravelers.exe -firstarticle
```

NOTE: Multiple command line arguments can be combined in a single command line. For example:

```
pTravelers.exe -user jima -password predator -firstarticle
```

New! Client Command Line

A new command line argument has been added to automatically to allow Predator Travelers Administrators to run as a Predator Travelers Client license. For example:

```
ptrav.exe -client
```

New! View Travelers Command Line

A new command line argument has been added to automatically start the View Travelers view. For example:

```
ptrav.exe –viewtravelers
```

NOTE: Multiple command line arguments can be combined in a single command line. For example:

```
pTravelers.exe –user jima –password predator –viewtravelers
```

New! View Parts Command Line

A new command line argument has been added to automatically start the View Parts. For example:

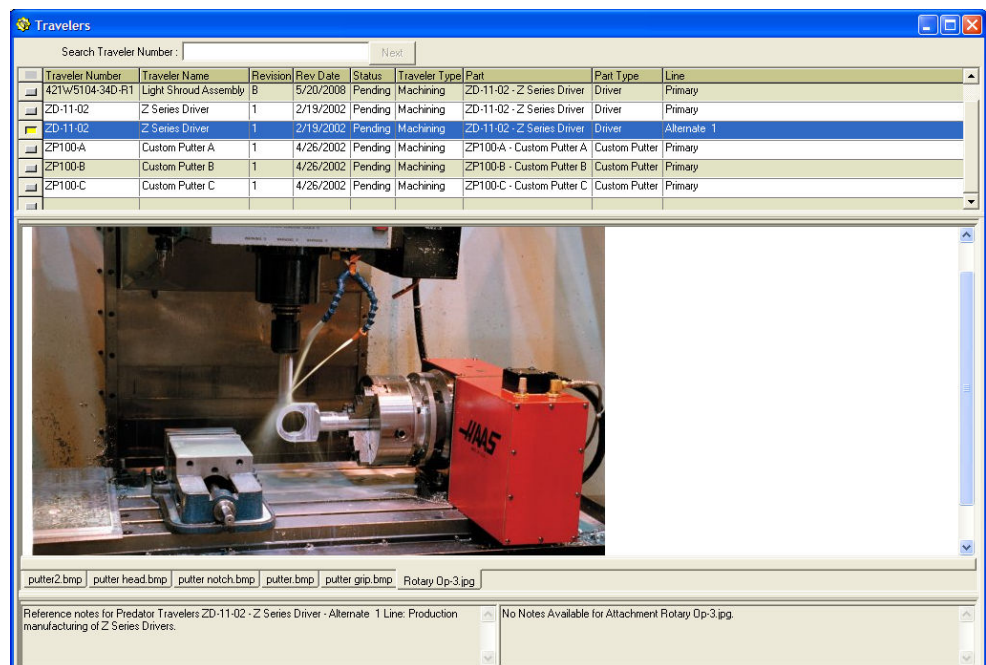
```
ptrav.exe –viewparts
```

NOTE: Multiple command line arguments can be combined in a single command line. For example:

```
ptrav.exe –user jima –password predator –viewparts
```

New! View Travelers

A new View Travelers option has been added to display a list of travelers and/or search for specific travelers. 11 new right mouse shortcuts have been added to simplify New, View Single Traveler, Print Bar Code Label, Edit Traveler Details, Edit Operations, Components per Operation, Release Traveler, Revise Traveler, Select Customer per Traveler, Delete Traveler, Unrelease and Rollback Traveler.



New! Consolidate/Drill Down Chart Preference

Consolidate/Drill Down Chart preference has been added within Predator Travelers v8.0 which is automatically saved per user.

New! 2D/3D Chart Preference

A new modal 2D/3D Chart preference has been added within Predator Travelers v8.0 which is automatically saved per user.

New! Horizontal/Vertical Chart Preference

A new modal Horizontal/Vertical Chart preference has been added within Predator Travelers v8.0 which is automatically saved per user.

New! Chart Keyboard Shortcuts

All charts that display multiple pages or sets can be navigated with the home, end, pgup and pgdn keys.

New! Background Option

A new optional background image has been added. The default image is a Traveler work flow image. This image can be customized by replacing ptrav.bmp within the Travelers 8.0 folder. Background images can be toggled on and off with the Option > Background menu and it also can be managed with permissions.

Improved! Import Data

Importing of CSV files has been improved to provide a progress bar and support for a greater number of components with less memory requirements. Importing a CSV file is now a two step process with the first step analyzing the CSV file for formatting issues and duplicates. The second step imports the actual data into the database.

Improved! Logon

Within Predator Travelers v8.0 the logon is automatically remembered from the previous session so only the password has to be entered each time. In addition, a Caps Lock and Num Lock reminder has been added.

Improved! View Components

Predator Travelers v8.0 improves the 27 different View Components dialogs by adding a dynamic search feature. Searching defaults to the component number field. By clicking any field, Predator automatically sorts the components and changes the search field. The search field is dynamic with each keystroke so as soon as a match is found the component is automatically highlighted. Within the search field the following special characters can be used * for wildcards, > for greater than, < for less than, >= for greater than or equal, and finally <= for less than or equal. For example, typing ST will automatically jump to the first component that starts with an ST including STAR, STARRET etc. If you typed *ST then the following components will be found 1000ST, 41ST etc. The greater than and less than special characters require numeric or date fields.

In addition the direction of column sorting defaults to ascending A-Z if descending Z-A sort order is desired simply click the column a second time.

Finally, when using the New and Edit shortcuts the dialog is now automatically centered within the application window.

Improved! View Single, Setup and Work Traveler

Viewing single, setup and work travelers has been improved when viewing components per operation to only show the tabs where actual components have been attached. This simplifies viewing of travelers.

Improved! Traveler Cover Report

The traveler cover report has been improved with the addition of bar code labels for the primary fields.

Improved! Traveler Express Cover Report

The traveler express cover report has been improved with the addition of bar code labels for the primary fields and for security reasons the path has been eliminated so only the filename is displayed.

Improved! Report Totals

All report totals have been standardized to immediately follow the group footer vs. the bottom of the last page.

Improved! Bar Code Label Printing

Predator Travelers v8.0 improves the readability of the printed bar codes. In addition, User bar codes now display first and last name.

Improved! Extended Desktop Support

All reports, forms and the application itself will automatic re-position their windows when the position of any extended desktop monitor is moved or eliminated.

Improved! Traveler APIs

Additional APIs (application programming interfaces) have been added and several existing ones have been improved. Refer to the Traveler API specific help file for additional details.

Improved! Toolbar

Predator Travelers v8.0 improves the toolbar with a new View Single Traveler toolbar button and a new View Travelers toolbar button.

Improved! HTML based Online Help

Updated online help expands several topics with new details.

Improved! Floating Network Licensing

v8.0 of Predator Travelers eliminates the three seat minimum requirement. A single license can be floated if desired.

For the latest on Predator Travelers, check our web site at <http://www.predator-software.com>