

## Predator Tracker™ v8.0 – What's New

*Latest features and benefits in v8.0*

---

### Before Installing v8.0

Predator Tracker v8.0 requires Windows 2000, XP, 2003 Server or Vista. Existing customers that have older versions of Windows such as Windows 95, 98, ME or NT v4.0 must upgrade Windows prior to installing v8.0 of Predator Tracker.

Existing Tracker customers should backup the database prior to upgrading. Predator Tracker Administrator v8.0 will upgrade the database automatically from older v1.x, v2.x, v3.x or v7.x versions to v8.0. After the database has been upgrade to v8.0 older versions of Predator Tracker will not be able to use the database.

NOTE: Microsoft Internet Explorer v5.x or later is required to be installed before installing Predator Tracker v8.0.

---

### Why v8.0?

By design, the primary goal of this release is to improve day to day tool and gage crib productivity such as improved Check In and Check Out processes. Along the way support for Vista and 64 bit editions of Windows have been added. Details of what's new are explained throughout this document and within the online help.

---

### Installing v8.0

A new Install Wizard has been developed for v8. It is based on a single .MSI image and .CAB files have been eliminated. If you are running Windows 98, ME or NT v4.0 you must upgrade to Windows 2000, XP, 2003 Server or Vista prior to installing v8.0 of Predator Tracker.

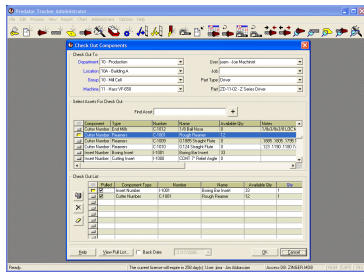
By default installation occurs in the \program files\predator software\tracker 8.0 directory. If you were previously running v7.x we recommend uninstalling v7.x prior to installing v8.0.

© 1994 – 2008 Predator Software Inc. All rights reserved.

THIS IS A LIVING DOCUMENT. The information contained in this document represents the current view of Predator Software Inc. on the issues discussed as of the date of publication. Because Predator Software Inc. must respond to changing market conditions, it should not be interpreted to be a commitment on the part of Predator Software Inc., and Predator Software Inc. cannot guarantee the accuracy of any information presented after the date of publication.

---

## Predator Tracker



---

### Network Installations of v8.0

By committing to store the product installation on a server, users will enjoy automatic healing of all critical files upon running Predator Tracker. For example, suppose a user accidentally deletes ptracker.exe. Under normal circumstances he would be down and the software would fail to run. With v8.0 when the user double clicks the desktop shortcut all critical files are checked and if necessary restored from the network server and the software begins to run automatically.

The easiest way to perform a network installation is to step through the following:

1. Copy the contents of the CD to a \predator cd images\CD30\ or similar directory.
2. Run the setuptracker.exe from the CD30 directory.

**NOTE:** Should any automatic healing be necessary, Predator Tracker will be able to automatically extract the necessary files from the appropriate files stored in the CD30 directory. If you install from a CD, Predator Tracker will be forced to prompt for the CD.

---

### What's New in v8.0?

#### New! Microsoft Windows Vista Support

Support for Microsoft Windows Vista has been added with v8.0 of Predator Tracker.

#### New! Microsoft Windows 64 Bit Support

Support for Microsoft Windows XP Professional x64 Edition, Windows 2003 Server x64 Edition and Windows Vista x64 Editions have been added with v8.0 of Predator Tracker.

#### New! Microsoft Office Access 2007 Support

Support for Access 2007 has been added with v8.0 of Predator Tracker.

#### New! Oracle Database 11g Support

Support for Oracle Database 11g has been added with v8.0 of Predator Tracker.

#### New! International Support

Internationalization of Predator Tracker has been re-designed so a single PTRACKER.exe can support multiple languages. Our initial release includes English and Chinese. Additional languages can be added as they become available. Predator Tracker automatically honors that appropriate language based on the Windows language. For example, if you have Chinese Windows installed then Predator Tracker will automatically display in Chinese. This effort significantly simplifies product releases and allows a worldwide customer base to run the same version.

#### New! Dynamic Wizard Bitmaps

Predator Tracker v8.0 has added dynamic wizard bitmaps to the following new and edit wizards: tools, cutters, inserts, kits and gages. These bitmaps (\*.bmp) need to be the first attachment to the appropriate tool type, cutter type, insert type, kit type and gage type. All bitmaps should be formatted for 120 pixels wide by 275 pixels tall.

---

### **New! New Jobs**

Predator Tracker v8 adds the ability to create new jobs. In addition, creating new customers within the new job wizard is now supported. Finally, a new option that allows jobs to be automatically released during the new job wizard has been added.

### **New! New Customers**

Predator Tracker v8 adds the ability to create new customers.

### **New! Edit Jobs**

Predator Tracker v8 adds the ability to edit and delete existing jobs. In addition, creating new customers within the edit job wizard is now supported.

### **New! Edit Customers**

Predator Tracker v8 adds the ability to edit and delete existing customers.

### **New! Format String Job Number**

Predator Tracker v8 adds the ability to define and enforce automatic job numbers.

### **New! Format String Kit Serial Number**

Predator Tracker v8 adds the ability to define and enforce automatic kit serial numbers.

### **New! Format String Tool Serial Number**

Predator Tracker v8 adds the ability to define and enforce automatic tool serial numbers.

### **New! Format String Gage Serial Number**

Predator Tracker v8 adds the ability to define and enforce automatic gage serial numbers.

### **New! View Jobs**

Predator Tracker v8 adds the ability to view jobs.

### **New! View Customers**

Predator Tracker v8 adds the ability to view customers.

### **New! 2 Job Reports**

Predator Tracker v8 adds the Component Job report and Job History report.

### **New! 2 Customer Reports**

Predator Tracker v8 adds the Component Customer report and Customer History report.

### **New! Import Jobs**

Predator Tracker v8 adds the ability to import jobs.

### **New! Import Customers**

Predator Tracker v8 adds the ability to import customers.

### **New! Job APIs**

Predator Tracker v8 adds 18 new job APIs for improved integration with other software applications.

### **New! Customer APIs**

Predator Tracker v8 adds 6 new customer APIs for improved integration with other software applications.

---

### **New! Allow Multiple Parts per Job**

Predator Tracker v8 adds a new option to allow multiple parts per job or a single part per job.

### **New! Delete Key Shortcut**

Predator Tracker v8 adds a delete key shortcut within the following wizards: New Purchase Order, New Kit Number, New Job Number, Tool Rework Operations, Gage Calibration Operations, Edit Purchase Order, Edit Kit Number and Edit Job Number, Check In and Check Out.

### **New! Insert Key Shortcut**

Predator Tracker v8 adds a insert key shortcut within the following wizards: New Purchase Order, New Kit Number, New Job Number, Tool Rework Operations, Gage Calibration Operations, Edit Purchase Order, Edit Kit Number and Edit Job Number, Check In and Check Out.

### **New! User Command Line**

A new command line argument has been added to automatically specify the user name for the login. For example:

```
ptracker.exe –user jima
```

### **New! Password Command Line**

A new command line argument has been added to automatically specify the password for the login. For example:

```
ptracker.exe –password predator
```

NOTE: The user and the password can be combined in a single command line. For example:

```
ptracker.exe –user jima –password predator
```

### **New! View Tools Command Line**

A new command line argument has been added to automatically start the View Tools view. For example:

```
ptracker.exe –viewtools
```

NOTE: Multiple command line arguments can be combined in a single command line. For example:

```
ptracker.exe –user jima –password predator –viewtools
```

### **New! View Cutters Command Line**

A new command line argument has been added to automatically start the View Cutters view. For example:

```
ptracker.exe –viewcutters
```

NOTE: Multiple command line arguments can be combined in a single command line. For example:

```
ptracker.exe –user jima –password predator –viewcutters
```

---

### **New! View Inserts Command Line**

A new command line argument has been added to automatically start the View Inserts view. For example:

```
ptracker.exe --viewinserts
```

NOTE: Multiple command line arguments can be combined in a single command line. For example:

```
ptracker.exe --user jima --password predator --viewinserts
```

### **New! View Gages Command Line**

A new command line argument has been added to automatically start the View Gages view. For example:

```
ptracker.exe --viewgages
```

NOTE: Multiple command line arguments can be combined in a single command line. For example:

```
ptracker.exe --user jima --password predator --viewgages
```

### **New! Consolidate/Drill Down Chart Preference**

Consolidate/Drill Down Chart preference has been added within Predator Tracker v8.0 which is automatically saved per user.

### **New! View Kits Command Line**

A new command line argument has been added to automatically start the View Kits view. For example:

```
ptracker.exe --viewkits
```

NOTE: Multiple command line arguments can be combined in a single command line. For example:

```
ptracker.exe --user jima --password predator --viewkits
```

### **New! Check In Command Line**

A new command line argument has been added to automatically start the Check In dialog. For example:

```
ptracker.exe --checkin
```

NOTE: Multiple command line arguments can be combined in a single command line. For example:

```
ptracker.exe --user jima --password predator --checkin
```

### **New! Check Out Command Line**

A new command line argument has been added to automatically start the Check Out dialog. For example:

```
ptracker.exe --checkout
```

NOTE: Multiple command line arguments can be combined in a single command line. For example:

```
ptracker.exe --user jima --password predator --checkout
```

---

### **New! View Jobs Command Line**

A new command line argument has been added to automatically start the View Jobs. For example:

```
ptracker.exe –viewjobs
```

NOTE: Multiple command line arguments can be combined in a single command line. For example:

```
ptracker.exe –user jima –password predator –viewjobs
```

### **New! View Parts Command Line**

A new command line argument has been added to automatically start the View Parts. For example:

```
ptracker.exe –viewparts
```

NOTE: Multiple command line arguments can be combined in a single command line. For example:

```
ptracker.exe –user jima –password predator –viewparts
```

### **New! Client Command Line**

A new command line argument has been added to automatically allow Predator Tracker Administrators to run as a Predator Tracker Client license. For example:

```
ptracker.exe –client
```

### **New! 2D/3D Chart Preference**

A new modal 2D/3D Chart preference has been added within Predator Tracker v8.0 which is automatically saved per user.

### **New! Horizontal/Vertical Chart Preference**

A new modal Horizontal/Vertical Chart preference has been added within Predator Tracker v8.0 which is automatically saved per user.

### **New! Chart Keyboard Shortcuts**

All charts that display multiple pages or sets can be navigated with the home, end, pgup and pgdn keys.

### **New! Background Option**

A new optional background image has been added. The default image is a Tracker work flow image. This image can be customized by replacing ptracker.bmp within the Tracker 8.0 folder. Background images can be toggled on and off with the Option > Background menu and it also can be managed with permissions.

### **New! Automatic Job Release**

Predator Tracker v8.0 includes a new checkbox option to automatically release jobs during the New Job and Edit Job wizards.

---

### **Improved! Pulled Components Report**

Predator Tracker v8.0 improves the Pulled Components Report with new bar codes for crib locations and component numbers. In addition, this report has been re-designed for improved readability. Finally, the bar codes within this report automatically honor the Check Out with Asset numbers option.

### **Improved! Return to Crib Report**

Predator Tracker v8.0 improves the Return to Crib Report with new bar codes for crib locations and component numbers. In addition, this report has been re-designed for improved readability. Finally, the bar codes within this report automatically honor the Check Out with Asset numbers option.

### **Improved! Bar Code Label Printing**

Predator Tracker v8.0 improves the readability of the printed bar codes. In addition, several bugs were fixed. In addition, User bar codes now display first and last name. Finally, it automatically honors the check out with asset numbers option.

### **Improved! Purchase Order Requests**

Predator Tracker v8.0 adds notes to purchase orders.

### **Improved! Import Data**

Importing of CSV files has been improved to provide a progress bar and support for a greater number of components with less memory requirements. Importing a CSV file is now a two step process with the first step analyzing the CSV file for formatting issues and duplicates. The second step imports the actual data into the database.

### **Improved! Report Totals**

All report totals have been standardized to immediately follow the group footer vs. the bottom of the last page.

### **Improved! Assemble Kits**

Predator Tracker v8.0 improves the Assemble Kits wizard with the option for automatic kit serial number. In addition, the Pulled Components Report has been improved with new bar codes for crib locations and component numbers. In addition, this report has been re-designed for improved readability.

### **Improved! Receive Purchase Orders**

Predator Tracker v8.0 improves the Receive Purchase Orders wizard with the option for automatic tool and gage serial numbers.

### **Improved! Consumption Reports**

Predator Tracker v8.0 improves the cutter and insert consumption reports with better filters for jobs, part types and parts.

### **Improved! Logon**

Within Predator Tracker v8.0 the logon is automatically remembered from the previous session so only the password has to be entered each time. In addition, a Caps Lock and Num Lock reminder has been added.

## Improved! Check In

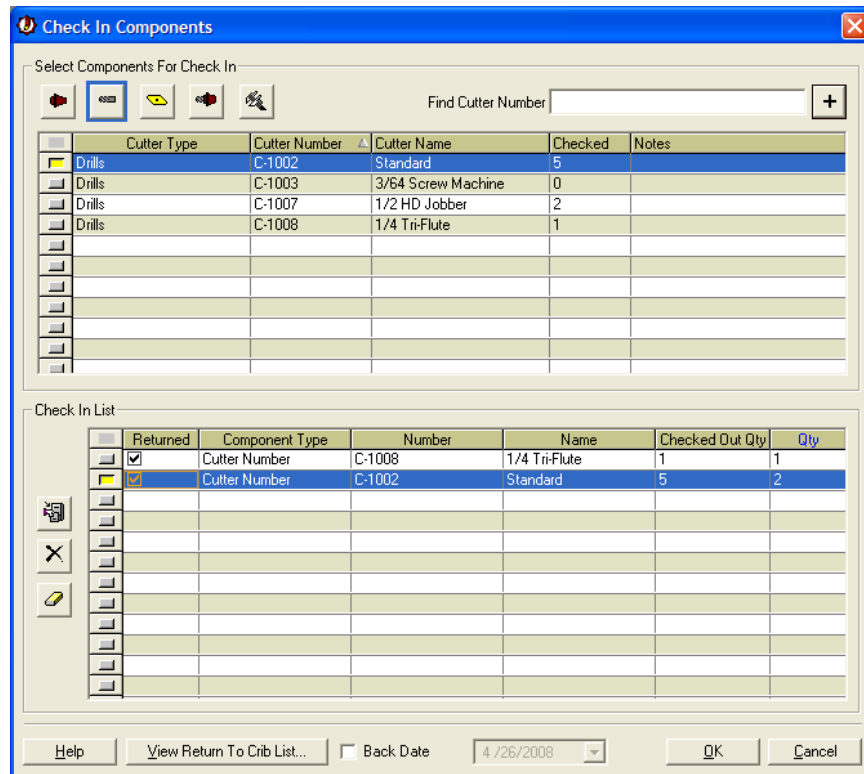
Predator Tracker v8.0 improves the Check In dialog with improved USB and keyboard style based bar code support. With component style checkout F2-F6 function key support has been added to switch between tools, cutters, inserts gages and kits.

The number of components displayed is now automatically filtered to only display items that have been previously checked out. Disposable items are always displayed with a check out quantity of zero. This is to allow disposable items to be returned and added back into inventory. Also the order of the displayed components defaults to the component number. Sorting within the top grid has been improved to display the direction of column sorting and defaults to ascending A-Z if descending Z-A sort order is desired simply click the column a second time.

The return to crib dialog has been improved to simplify the display of the default crib location. The return to crib report has been re-designed for easier check ins and to display bar codes.

In addition, all components and serial numbers will be automatically returned if a default crib location is specified per component. Automatic returning works either by double clicking the item within the top grid to increment the quantity or by typing the quantity within the bottom grid. Also when selecting specific serial numbers the number of items can be automatically increased by selecting additional serial numbers. If the crib location's target has been reached then Predator Tracker will automatically attempt the next appropriate crib location.

Finally, the number of checked out components has been added to the top grid.



## Improved! Check Out

Predator Tracker v8.0 improves the Check Out dialog with improved USB and keyboard style based bar code support. With component style checkout F2-F6 function key support has been added to switch between tools, cutters, inserts, gages and kits

Also the order of the displayed components defaults to the component number. Sorting within the top grid has been improved to display the direction of column sorting and defaults to ascending A-Z if descending Z-A sort order is desired simply click the column a second time.

The select serial numbers/pull crib locations dialog has been improved to simplify the display of the default crib location.

In addition, all components and serial numbers will be automatically pulled if a default crib location is specified per component. Automatic pulling works either by double clicking the item within the top grid to increment the quantity or by typing the quantity within the bottom grid. Also when selecting specific serial numbers the number of items can be automatically increased by selecting additional serial numbers.

Finally, selecting a job will automatically select the part type and part number. While checking out tools and gages to completed jobs are automatically restricted.

NOTE: Jobs no longer have to be released prior to checking out tools, cutters, inserts, gages or kits. If multiple parts per job are defined within the job then the first part number will be displayed.

Insert Type	Insert Number	Insert Name	Available Qty	Notes
Cutting Insert	I-1000	CCMT 7° Relief Angle	0	
Boring Insert	I-1001	Boring Bar Insert	0	
Cutting Insert	I-1002	CPG 11° Relief Angle	18	
Cutting Insert	I-1003	CPG 11° Relief Angle	0	
Cutting Insert	I-1004	RNMG 0° Relief Angle	0	
Cutting Insert	I-1005	SPG 11° Relief Angle	0	
Cutting Insert	I-1006	SPG 11° Relief Angle	0	

Pulled	Type	Number	Name	Available Qty	Qty
<input checked="" type="checkbox"/>	Tool Number	T-1003	Live Center	5	1
<input checked="" type="checkbox"/>	Cutter Number	C-1002	Standard	22	1
<input checked="" type="checkbox"/>	Insert Number	I-1002	CPG 11° Relief Angle	18	4
<input type="checkbox"/>					
<input type="checkbox"/>					
<input type="checkbox"/>					
<input type="checkbox"/>					

---

### **Improved! View Components**

Predator Tracker v8.0 improves the 26 different View Components dialogs by adding a dynamic search feature. Searching defaults to the component number field. By clicking any field, Predator automatically sorts the components and changes the search field. The search field is dynamic with each keystroke so as soon as a match is found the component is automatically highlighted. Within the search field the following special characters can be used \* for wildcards, > for greater than, < for less than, >= for greater than or equal, and finally <= for less than or equal. For example, typing ST will automatically jump to the first component that starts with an ST including STAR, STARRET etc. If you typed \*ST then the following components will be found 1000ST, 41ST etc. The greater than and less than special characters require numeric or date fields.

In addition the direction of column sorting defaults to ascending A-Z if descending Z-A sort order is desired simply click the column a second time.

Finally, when using the New and Edit shortcuts the dialog is now automatically centered within the application window.

### **Improved! View Cutters**

Predator Tracker v8.0 improves View Cutters by displaying the coating column. In addition, the following items have been added to the right mouse or shortcut menu: Find, Loose, Make Active, Make Inactive, Scrap, Unscrap and Reclassify.

### **Improved! View Inserts**

Predator Tracker v8.0 improves View Inserts by displaying the coating column. In addition, the following items have been added to the right mouse or shortcut menu: Find, Loose, Make Active, Make Inactive, Scrap, Unscrap and Reclassify.

### **Improved! View Tools**

Predator Tracker v8.0 improves View Tools by adding the following items to the right mouse or shortcut menu: Assign Crib Location, Make Active, Make Inactive, and Reclassify.

### **Improved! View Gages**

Predator Tracker v8.0 improves View Gages by adding the following items to the right mouse or shortcut menu: Assign Crib Location, Make Active, Make Inactive, Reclassify and Reference Dimensions.

### **Improved! View Kits**

Predator Tracker v8.0 improves View Kits by adding the following items to the right mouse or shortcut menu: Assign Crib Location and Assemble.

### **Improved! Add Existing Tools**

Predator Tracker v8.0 improves the Add Existing Tools wizard with the option for automatic tool serial numbers and new buttons for adding, deleting and delete all.

### **Improved! Add Existing Gages**

Predator Tracker v8.0 improves the Add Existing Gages wizard with the option for automatic gage serial numbers and new buttons for adding, deleting and delete all.

---

**Improved! Extended Desktop Support**

All reports, forms and the application itself will automatic re-position their windows when the position of any extended desktop monitor is moved or eliminated.

**Improved! HTML based Online Help**

Updated online help expands several topics with new details.

**Improved! Floating Network Licensing**

v8.0 of Predator Tracker eliminates the three seat minimum requirement. A single license can be floated if desired.

**Bug Fix! Insert and Cutter Charts**

Predator Tracker v8.0 fixes a bug when displaying insert and cutter quantities with the consumption charts.

**Bug Fix! Check In Report**

Predator Tracker v8.0 fixes a View Return to Crib List report bug when checking in multiple serial numbers.

**Bug Fix! Check Out Report**

Predator Tracker v8.0 fixes a View Pull List report bug when displaying component quantities.

**Bug Fix! Initial Login**

Fixed a bug when performing the initial login on a Windows workgroup style network running Microsoft SQL Server Express.

For the latest on Predator Tracker, check our web site at

<http://www.predator-software.com>