



Predator FLM – Software Installation

Step by step guide to installing Predator Floating Network Licensing

Predator FLM (Floating License Manager) Installation

Step through the following to install Predator FLM on a network:

1. Identify a server or desktop PC that will operate 24x7 as the target PC for Predator FLM. It is important to note that Windows 2000, XP or 2003 Server are required for this PC and that it must have either a USB port or a Parallel port for the Predator SIM.

NOTE: Predator FLM does not need to be installed on any client PCs. Floating network licensing is automatically included within all v7 installations of Predator applications.

2. Insert the Predator CD and the following Autorun screen will start automatically.



3. Select the Install Products button on the left and the following second screen will be displayed.



4. Select the FLM button on the right and the following installation wizard will appear.

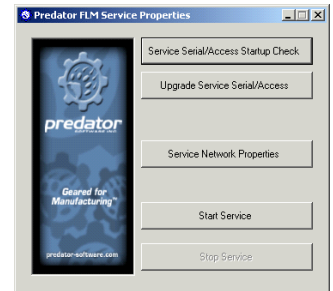
© 1994 – 2006 Predator Software Inc. All rights reserved.

THIS IS A LIVING DOCUMENT. The information contained in this document represents the current view of Predator Software Inc. on the issues discussed as of the date of publication. Because Predator Software Inc. must respond to changing market conditions, it should not be interpreted to be a commitment on the part of Predator Software Inc., and Predator Software Inc. cannot guarantee the accuracy of any information presented after the date of publication.



5. Step through the entire installation wizard to finish the install on the server PC.
6. Plug the include USB or Parallel SIM into the PC.

7. From the Start menu select Predator FLM 2005 and then FLM 2005 Service Manager and the following dialog is displayed.



8. Click the Upgrade Service Serial/Access button and the following dialog is displayed.
9. Type in your name and company details along with the FLM serial number and access code that was provided.
10. The License Type pulldown should be either USB or Parallel depending on the SIM that was provided.

11. Click the OK button.

NOTE: Should Predator report an error push the SIM ID button to verify that Predator can see that the SIM is plugged in a working USB or parallel port.

12. Click the Service Network Properties button and the following dialog is displayed
13. The default ethernet port is 1024 but any unused port can be used.

NOTE: We recommend avoiding all ports less than 1024.

14. Click the OK button



NOTE: It is extremely important that this port is not blocked via the corporate or local firewalls. The Any IP address allows IT staff to restrict which network card/IP address to allow incoming FLM requests. It is recommended to always set this to Any IP Address (the default) for all initial installations.

15. Copy the PLicenseFile.xml that has been provided into the following folder:

c:\program files\predator software\FLM 7.0\

NOTE: The above folder is the default location. If a different default folder was specified during the installation then use the specified folder.



16. Click the Start Service button.

17. A Startup Successful dialog should be displayed.

18. Click OK to continue.

19. Click the X button to close the Predator FLM Service Properties.

NOTE: If the service fails to startup, check the Window's Event Viewer to review any FLM Service errors.

20. Install the appropriate Predator applications on one or more PCs and proceed with a normal installation.

21. When the application displays the Upgrade dialog specify License Type of FLM and then type the IP address for the server PC along with the same Port number.

NOTE: Should a client PC fail to see the Predator FLM server. First try pinging the Predator FLM server to verify basic network connectivity. Second, review the Firewall settings to make sure that the specified port is not blocked.

NOTE: When all of the obvious troubleshooting steps fail. Stop the FLM Service, add the following registry entry and start the FLM Service.

HKLM\Software\Predator\FLMService\ExtendedErrorLog

With this additional key numerous events will be created to help troubleshoot the issue.